



ÖZGÜL AĞIRLIK LİSTELERİ



Hakkımızda

İnşaat ve yapı sektöründe, demir ve çeliğin kullanıldığı her alanda hizmet sunan KONMAKSAN, en büyük olmak değil, en kaliteli hizmeti sunmak için çalışıyor.

Müşteri beklentilerinin karşılandığı, en üst kalitede ürün, rekabet edebilir bir fiyat politikası ve zamanında teslim şartlarının gerekliliğini ilke olarak kabul eden KONMAKSAN Çelik Konstrüksiyon ve Panel Firmamız, 1996 tarihinde Konya'da kurulmuştur. %100 yerli sermaye ile kurulan KONMAKSAN geçen zaman içinde müşterilerine sunduğu kaliteli ürün, insan odaklı hizmet politikaları ve sıkı işbirliği sayesinde, yüksek bir ivmeyle istikrarlı şekilde büyümüştür.

Kurulduğu tarihten bu yana kapasitesini %100 oranında artırarak ülkemizde ve uluslararası boyutta birçok projeye de imza atmıştır. Yüksek teknoloji makina parkuru, profesyonel çalışma metotları ile uluslararası standartlardan ve kalitenin sürdürülebilirliği ilkesinden asla taviz vermemiştir.

Projeye bazlı olarak değişmekle birlikte aylık 1100 ton çelik imalat ve montaj kapasitesine sahip olan firmamız, çatı ve cephe panellerinde aylık ortama 60.000m², soğuk oda panel montajlarında ise aylık ortamala 30.000m² kapasiteye sahiptir.

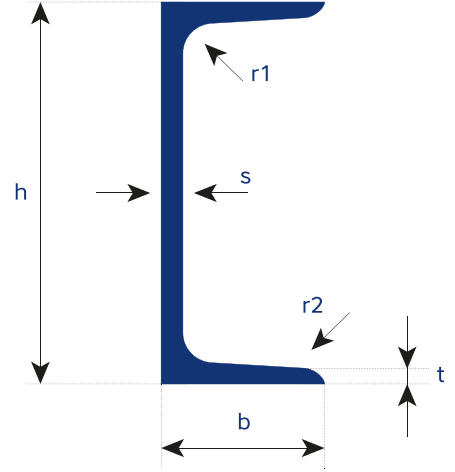
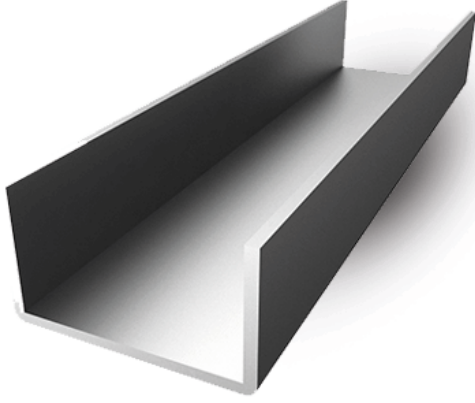
KONMAKSAN, yatırımcılara; çağdaş, pratik ve süratli çözümler sunmak üzere kurulmuş bir hizmet markası olmuştur ve bu yolda ilerlemeye devam edecektir.

Bu ilerleyişimizde müşterilerimizin takdiri, mutluluğu ve güveni, en büyük övünç kaynağımızdır.

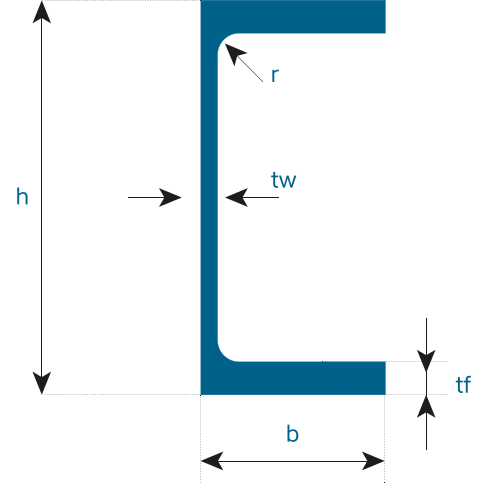


İçindekiler

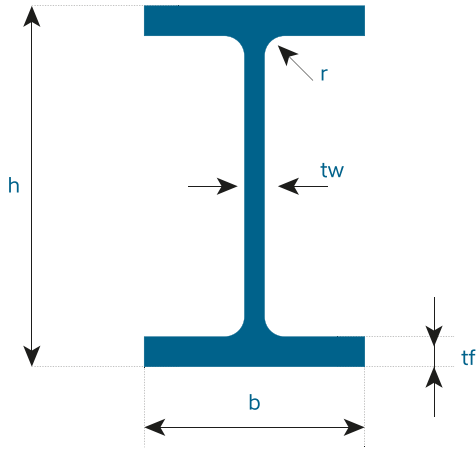
PROFİL DEMİRLER	NPU	1
	NPI	2
	UPE	3
	IPE	4
	HEA	5
	HEB	6
	HEM	7
KÖŞEBENTLER		8-9
LAMALAR - KARE DOLU DEMİRLER		10
KARE PROFİLLER		11
DİKDÖRTGEN PROFİLLER		12
SANAYİ BORULARI		13
SU BORULARI ve GENEL AMAÇLI BORULAR		14
SPIRAL KAYNAKLI BORULAR		15
GALVANİZLİ DÜZ LEVHALAR		16
BAKLAVALI SAACLAR - SETA SAACLAR		17



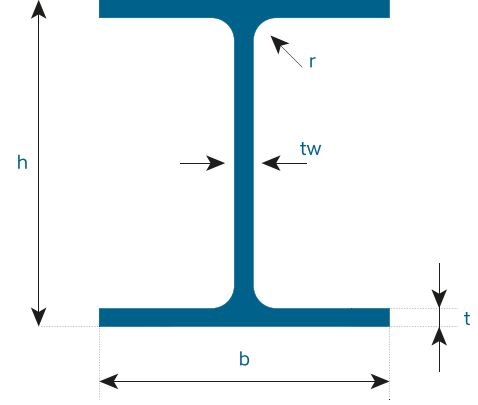
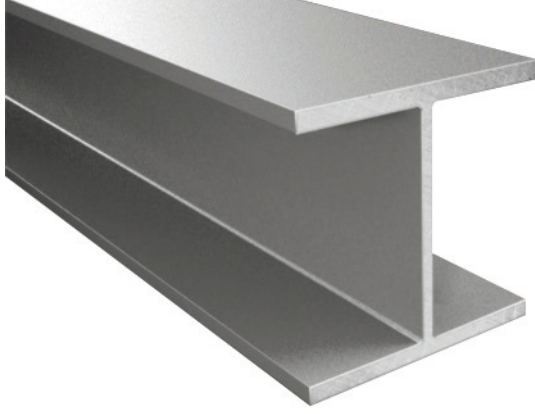
KESİT	BOYUTLAR										Kesit Alanı cm ²	Toplam Yüzey Alanı m ² /m	Ağırlık kg/m
	NPU	h	tolerans	b	tolerans	s	tolerans	t	tolerans	r1			
40 x 20	40	±1,5	20	±1,5	5	±0,5	5,5	-0,5	5	2,5	3,66	0,142	2,87
40	40		35		5		7		7	3,5	6,21	0,199	4,87
50 x 25	50		25		5		6		6	3	4,92	0,181	3,86
50	50		38		5		7		7	3,5	7,12	0,232	5,59
65	65		42		5,5		7,5		7,5	4	9,03	0,273	7,09
80	80		45		6		8		8	4	11,0	0,312	8,64
100	100	±2,0	50	±1,5	6	±0,5	8,5	-1,0	8,5	4,5	13,5	0,372	10,60
120	120		55		7		9		9	4,5	17,0	0,434	13,40
140	140		60		7		10		10	5	20,4	0,489	16,00
160	160		65		7,5		10,5		10,5	5,5	24,0	0,546	18,80
180	180		70		8		11		11	5,5	28,0	0,611	22,00
200	200		75		8,5		11,5		11,5	6	32,2	0,661	25,30
220	220	±3,0	80	±2,0	9	±0,7	12,5	-1,5	12,5	6,5	37,4	0,718	29,40
240	240		85		9,5		13		13	6,5	42,3	0,775	33,20
260	260		90		10		14		14	7	48,3	0,834	37,90
280	280		95		10		15		15	7,5	53,3	0,890	41,80
300	300		100		10		16		16	8	58,8	0,950	46,20
320	320		100		14		17,5		17,5	8,75	75,8	0,982	59,50
350	350	±3,0	100	±2,0	14	±0,7	16	-1,5	18	8	77,3	1,05	60,60
380	380		102		13,5		16		18	8	80,4	1,11	63,10
400	400		110		14		18		16	9	91,5	1,18	71,80



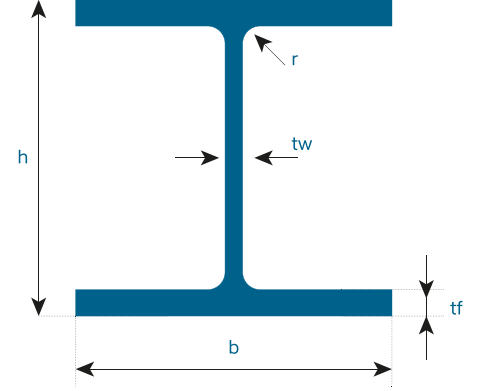
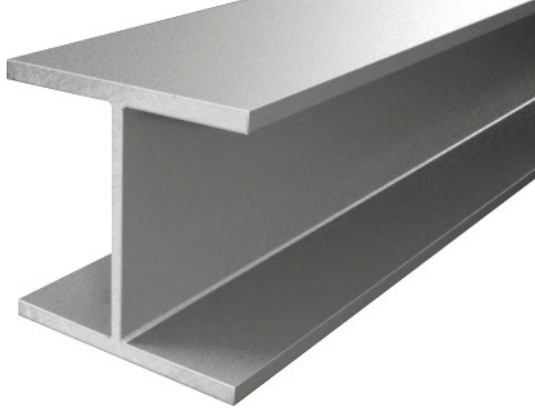
KESİT	BOYUTLAR					Kesit Alanı	Toplam Yüzey Alanı	Ağırlık	1 Boy Ağırlığı
	h	b	tw	tf	r				
UPE	mm					cm ²	m ² /m	kg/m	kg/12,1m
UPE 80	80	50	4,0	7,0	10	10,07	0,343	7,9	96
UPE 100	100	55	4,5	7,5	10	12,50	0,402	9,8	119
UPE 120	120	60	5,0	8,0	12	15,42	0,460	12,1	146
UPE 140	140	65	5,0	9,0	12	18,42	0,520	14,5	175
UPE 160	160	70	5,5	9,5	12	21,67	0,579	17,0	206
UPE 180	180	75	5,5	10,5	12	25,11	0,639	19,7	238
UPE 200	200	80	6,0	11,0	13	29,01	0,697	22,8	276
UPE 220	220	85	6,5	12,0	13	33,87	0,756	26,6	322
UPE 240	240	90	7,0	12,5	15	38,52	0,813	30,2	365
UPE 270	270	95	7,5	13,5	15	44,84	0,892	35,2	426
UPE 300	300	100	9,5	15,0	15	56,62	0,968	44,4	537
UPE 330	330	105	11,0	16,0	18	67,77	1,040	53,2	644
UPE 360	360	110	12,0	17,0	18	77,91	1,120	61,2	741
UPE 400	400	115	13,5	18,0	18	91,93	1,220	72,2	874



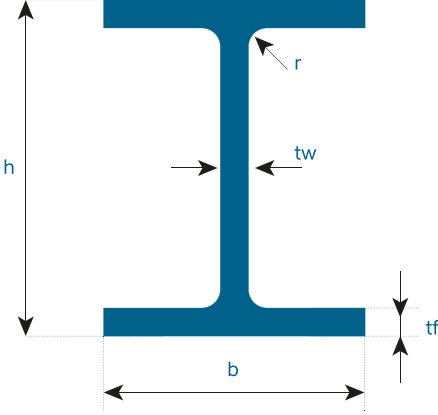
KESİT	BOYUTLAR					Kesit Alanı	Toplam Yüzey Alanı	Ağırlık
	h	b	tw	tf	r			
IPE	mm					cm ²	m ² /m	kg/m
IPE 100	100	55	4,1	5,7	7	10,32	0,400	8,1
IPE 120	120	64	4,4	6,3	7	13,21	0,475	10,4
IPE 140	140	73	4,7	6,9	7	16,43	0,551	12,9
IPE 160	160	82	5,0	7,4	9	20,09	0,623	15,8
IPE 180	180	91	5,3	8,0	9	23,95	0,698	18,8
IPE 200	200	100	5,6	8,5	12	28,48	0,768	22,4
IPE 220	220	110	5,9	9,2	12	33,37	0,848	26,2
IPE 240	240	120	6,2	9,8	15	39,12	0,922	30,7
IPE 270	270	135	6,6	10,2	15	45,95	1,041	36,1
IPE 300	300	150	7,1	10,7	15	53,81	1,160	42,2
IPE 330	330	160	7,5	11,5	18	62,61	1,254	49,1
IPE 360	360	170	8,0	12,7	18	72,73	1,353	57,1
IPE 400	400	180	8,6	13,	21	84,46	1,467	66,3
IPE 450	450	190	9,4	14,6	21	98,82	1,605	77,6
IPE 500	500	200	10,2	16,0	21	115,50	1,744	90,7
IPE 550	550	210	11,1	17,2	24	134,40	1,877	106,0
IPE 600	600	220	12,0	19,0	24	156,00	2,015	122,0
IPE 750 x 147	753	265	13,2	17,0	17	187,50	2,510	147,0
IPE 750 x 173	762	267	14,4	21,6	17	221,30	2,534	173,0
IPE 750x 196	770	268	15,6	25,4	17	250,80	2,552	196,0



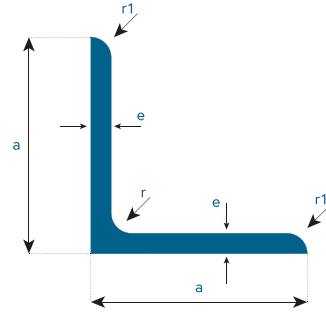
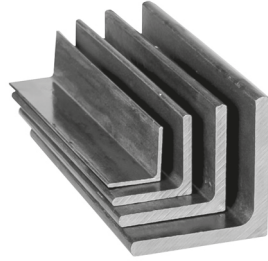
KESİT	BOYUTLAR					Kesit Alanı cm ²	Toplam Yüzey Alanı m ² /m	Ağırlık kg/m	1 Boy Ağırlığı kg/12,1m
	h	b	tw	tf	r				
HEA	mm								
HEA 100	96	100	5,0	8,0	12	21,24	0,561	16,7	202
HEA 120	114	120	5,0	8,0	12	25,34	0,677	19,9	241
HEA 140	133	140	5,5	8,5	12	31,42	0,794	24,7	299
HEA 160	152	160	6,0	9,0	15	38,77	0,906	30,4	368
HEA 180	171	180	6,0	9,5	15	45,25	1,024	35,5	430
HEA 200	190	200	6,5	10,0	18	53,83	1,136	42,3	512
HEA 220	210	220	7,0	11,0	18	64,34	1,255	50,5	611
HEA 240	230	240	7,5	12,0	21	76,84	1,369	60,3	730
HEA 260	250	260	7,5	12,5	24	86,82	1,484	68,2	825
HEA 280	270	280	8,0	13,0	24	97,26	1,603	76,4	924
HEA 300	290	300	8,5	14,0	27	112,50	1,717	88,3	1068
HEA 320	310	300	9,0	15,5	27	124,40	1,756	97,6	1181
HEA 340	330	300	9,5	16,5	27	133,50	1,795	105,0	1271
HEA 360	350	300	10,0	17,5	27	142,80	1,834	112,0	1355
HEA 400	390	300	11,0	19,0	27	159,00	1,912	125,0	1513
HEA 450	440	300	11,5	21,0	27	178,00	2,011	140,0	1694
HEA 500	490	300	12,0	23,0	27	197,50	2,110	155,0	1876
HEA 550	540	300	12,5	24,0	27	211,80	2,209	166,0	2009
HEA 600	590	300	13,0	25,0	27	226,50	2,308	178,0	2154
HEA 650	640	300	13,5	26,0	27	241,60	2,407	190,0	2299
HEA 700	690	300	14,5	27,0	27	260,50	2,505	204,0	2468
HEA 800	790	300	15,0	28,0	30	285,80	2,698	224,0	2710
HEA 900	890	300	16,0	30,0	30	320,50	2,896	252,0	3049
HEA 1000	990	300	16,5	31,0	30	346,80	3,095	272,0	3291



KESİT	BOYUTLAR					Kesit Alanı	Toplam Yüzey Alanı	Ağırlık	1 Boy Ağırlığı
	h	b	tw	tf	r				
HEB	mm					cm ²	m ² /m	kg/m	kg/12,1m
HEB 100	100	100	6,0	10,0	12	26,04	0,576	20,4	247
HEB 120	120	120	6,5	11,0	12	34,01	0,686	26,7	323
HEB 140	140	140	7,0	12,0	12	42,96	0,805	33,7	408
HEB 160	160	160	8,0	13,0	15	54,25	0,918	42,6	515
HEB 180	180	180	8,5	14,0	15	65,25	1,037	51,2	620
HEB 200	200	200	9,0	15,0	18	78,08	1,151	61,3	742
HEB 220	220	220	9,5	16,0	18	91,04	1,270	71,5	865
HEB 240	240	240	10,0	17,0	21	106,00	1,384	83,2	1007
HEB 260	260	260	10,0	17,5	24	118,40	1,499	93,0	1125
HEB 280	280	280	10,5	18,0	24	131,40	1,618	103,0	1246
HEB 300	300	300	11,0	19,0	27	149,10	1,732	117,0	1416
HEB 320	320	300	11,5	20,5	27	161,30	1,771	127,0	1537
HEB 340	340	300	12,0	21,5	27	170,90	1,810	134,0	1621
HEB 360	360	300	12,5	22,5	27	180,60	1,849	142,0	1718
HEB 400	400	300	13,5	24,0	27	197,80	1,927	155,0	1876
HEB 450	450	300	14,0	26,0	27	218,00	2,026	171,0	2069
HEB 500	500	300	14,5	28,0	27	238,60	2,125	187,0	2263
HEB 550	550	300	15,0	29,0	27	254,10	2,224	199,0	2408
HEB 600	600	300	15,5	30,0	27	270,00	2,323	212,0	2565
HEB 650	650	300	16,0	31,0	27	286,30	2,422	225,0	2723
HEB 700	700	300	17,0	32,0	27	306,40	2,520	241,0	2916
HEB 800	800	300	17,5	33,0	30	334,20	2,713	262,0	3170
HEB 900	900	300	18,5	35,0	30	371,30	2,911	291,0	3521
HEB1000	1000	300	19,0	36,0	30	400,00	3,110	314,0	3799

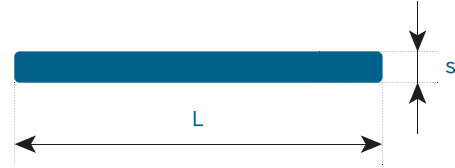


KESİT	BOYUTLAR					Kesit Alanı	Toplam Yüzey Alanı	Ağırlık	1 Boy Ağırlığı
	h	b	tw	tf	r				
HEM	mm					cm ²	m ² /m	kg/m	kg/12,1m
HEM100	120	106	12,0	20,0	12	53,24	0,619	41,8	506
HEM 120	140	126	12,5	21,0	12	66,41	0,738	52,1	630
HEM140	160	146	13,0	22,0	12	80,56	0,857	63,2	765
HEM 160	180	166	14,0	23,0	15	97,05	0,970	76,2	922
HEM 180	200	186	14,5	24,0	15	113,30	1,089	88,9	1076
HEM 200	220	206	15,0	25,0	18	131,30	1,203	103,0	1246
HEM 220	240	226	15,5	26,0	18	149,40	1,322	117,0	1416
HEM 240	270	248	18,0	32,0	21	199,60	1,460	157,0	1900
HEM 260	290	268	18,0	32,5	24	219,60	1,575	172,0	2081
HEM 280	310	288	18,5	33,0	24	240,20	1,694	189,0	2287
HEM 300	340	310	21,0	39,0	27	303,10	1,832	238,0	2880
HEM 320	359	309	21,0	40,0	27	312,00	1,866	245,0	2965
HEM 340	377	309	21,0	40,0	27	315,80	1,902	248,0	3001
HEM 360	395	308	21,0	40,0	27	318,80	1,934	250,0	3025
HEM 400	432	307	21,0	40,0	27	325,80	2,004	256,0	3098
HEM 450	478	307	21,0	40,0	27	335,40	2,096	263,0	3182
HEM 500	524	306	21,0	40,0	27	344,30	2,184	270,0	3267
HEM 550	572	306	21,0	40,0	27	354,40	2,280	278,0	3364
HEM 600	620	305	21,0	40,0	27	363,70	2,372	285,0	3449
HEM 650	668	305	21,0	40,0	27	373,70	2,468	293,0	3545
HEM 700	716	304	21,0	40,0	27	383,00	2,560	301,0	3642
HEM 800	814	303	21,0	40,0	30	404,30	2,746	317,0	3836
HEM 900	910	302	21,0	40,0	30	423,60	2,934	333,0	4029
HEM 1000	1008	302	21,0	40,0	30	444,20	3,130	349,0	4223

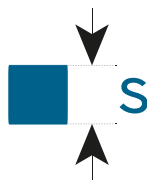


KESİT		BOYUTLAR					Kesit Alanı	Toplam Yüzey Alanı	Ağırlık							
L		a	tolerans	e	tolerans	r	r1	cm2	m2/m	kg/m						
25x25x	3	25	± 1,0	3	± 0,5	3,5	1,75	1,42	0,097	1,11						
	4			4				1,85		1,45						
	5			5				2,26		1,77						
30x30x	3	30		± 1,0		3	± 0,5	5	2,5	1,74	0,116	1,36				
	4					4				2,27		1,78				
	5					5				2,78		2,18				
35x35x	3	35				± 1,0		3	± 0,5	5	2,5	2,04	0,136	1,60		
	4							4				2,67		2,09		
	5							5				3,28		2,57		
	6							6				3,87		3,04		
40x40x	3	40						± 1,0		3	± 0,5	6	3	2,35	0,155	1,84
	4									4				3,08		2,42
	5									5				3,79		2,97
	6									6				4,48		3,52
45x45x	3	45								± 1,0		3	± 0,5	7	3,5	2,66
	4		4		3,49							2,74				
	5		5		4,30							3,38				
	6		6		5,09							4,00				
	7		7	5,86	4,60											
50x50x	3	50	± 1,0	3	± 0,5		7					3,5		2,96	0,194	2,33
	4			4										3,89		3,06
	5			5		4,80			3,77							
	6			6		5,69			4,47							
	7			7		6,56			5,15							
	8			8		7,41			5,82							
55x55x	5	55		± 1,5		5	± 0,75	8	4		5,32	0,213		4,18		
	6					6					4,31			4,95		
	8					8					8,23			6,46		
	10					10					10,10			7,90		
60x60x	4	60				± 1,5		4	± 0,75	8	4	4,71	0,233	3,70		
	5							5				5,82		4,57		
	6							6				6,91		5,42		
	8							8				9,03		7,09		
65x65x	6	65						± 1,5		6	± 0,75	9	4,5	7,53	0,252	5,91
	7		7		8,70					6,83						
	8		8		9,85					7,73						
	9		9		11,00					8,62						
	11		11		13,20					10,3						
70x70x	5	70	± 1,5		5					± 0,75		9	4,5	6,84	0,272	5,37
	6				6									8,13		6,38
	7			7	9,40		7,38									
	8			8	10,60		8,36									
	9			9	11,90		9,34									
	10			10	13,10		10,30									
11	11	14,30		11,20												

KESİT		BOYUTLAR						Kesit Alanı	Toplam Yüzey Alanı	Ağırlık
L		a	tolerans	e	tolerans	r	r1	cm2	m2/m	kg/m
75x75x	6	75		6		10	5	8,75	0,291	6,87
	7			7				10,10		7,94
	8			8				11,50		9,03
	10			10				14,10		11,10
	12			12				16,70		13,10
80x80x	6	80		6		10	5	9,35	0,311	7,34
	7			7				10,80		8,49
	8			8				12,30		9,63
	10			10				15,10		11,90
	12			12				17,90		14,00
90x90x	6	90	± 1,5	6	± 0,75	11	5,5	10,60	0,351	8,30
	8			8				13,90		10,90
	9			9				15,50		12,20
	10			10				17,7,10		13,40
	11			11				18,70		14,70
	12			12				20,30		15,90
	13			13				21,80		17,10
	16			16				26,40		20,70
100x100x	6,5	100		6,5		12	6	12,70	0,390	9,99
	8			8				15,50		12,20
	10			10				19,20		15,00
	12			12				22,70		17,80
	14			14				26,20		20,60
	15			15				27,90		21,90
	16			16				29,60		23,20
110x110x	10	110		10		12	6	21,20	0,430	16,60
	12			12				25,10		19,70
	14			14				29,00		22,80
120x120x	8	120		8		13	6,5	18,70	0,469	14,70
	10			10				23,20		18,20
	11			11				25,40		19,90
	12			12				27,50		21,60
	13			13				29,70		23,,30
130x130x	12	130		12		14	7	30,00	0,508	23,60
	14			14				34,70		27,20
	16			16				39,30		30,90
140x140x	13	140		13		15	7,5	35,00	0,547	27,50
	15			15				40,00		31,40
150x150x	10	150	± 2,0	10	± 1,0	16	8	29,30	0,586	23,00
	12			12				34,80		27,30
	14			14				40,30		31,60
	15			15				43,00		33,80
160x160x	15	160		15		17	8,5	46,610	0,625	36,20
	17			17				51,80		40,70
	19			19				57,50		45,10
180x180x	16	180		16		18	9	55,40	0,705	43,50
	18			18				61,90		43,60
	20			20				68,40		53,70
	22			22				74,70		58,60
200x200x	16	200		16		18	9	61,80	0,785	48,50
	18			18				69,310		54,30
	20			20				76,40		59,90
	24			24				90,60		71,10



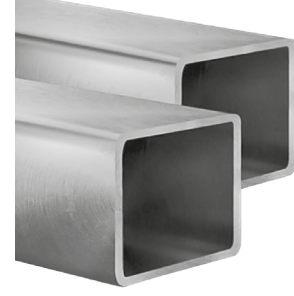
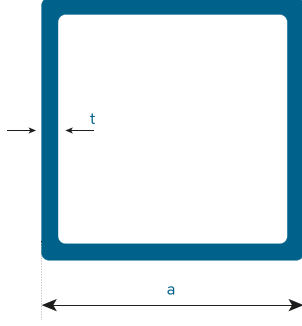
L (mm)	S (mm)																		
	3	4	5	6	7	8	10	12	14	15	16	18	20	22	25	30	35	40	50
	kg./m.																		
10	0,236	0,314	0,392	0,471	0,550	0,628													
12	0,283	0,377	0,471	0,565	0,659	0,754	0,942												
14	0,330	0,440	0,550	0,659	0,679	0,879	1,100	1,320											
15	0,353	0,471	0,589	0,706	0,824	0,942	1,180	1,410											
16	0,377	0,502	0,628	0,754	0,879	1,000	1,260	1,510	1,760										
18	0,424	0,565	0,706	0,848	0,989	1,130	1,410	1,700	1,980	2,120	2,260								
20	0,471	0,628	0,785	0,942	1,100	1,260	1,570	1,880	2,200	2,360	2,510	2,830							
22	0,518	0,691	0,864	1,040	1,210	1,380	1,730	2,070	2,420	2,590	2,760	3,100	3,450						
25	0,589	0,785	0,981	1,180	1,370	1,570	1,960	2,360	2,750	2,940	3,140	3,530	3,930	4,320					
30	0,707	0,942	1,180	1,410	1,650	1,880	2,360	2,830	3,300	3,530	3,770	4,240	4,710	5,180	5,890				
35	0,824	1,100	1,370	1,650	1,920	2,200	2,750	3,300	3,850	4,120	4,400	4,950	5,500	6,040	6,870	8,240			
40	0,942	1,260	1,570	1,880	2,200	2,510	3,140	3,770	4,400	4,710	5,020	5,650	6,280	6,910	7,850	9,420	10,99		
45	1,06	1,41	1,77	2,12	2,47	2,83	3,53	4,24	4,95	5,30	5,65	6,36	7,06	7,77	8,83	10,06	12,36	14,13	
50	1,18	1,57	1,96	2,36	2,75	3,14	3,92	4,71	5,50	5,89	6,28	7,06	7,85	8,64	9,81	11,78	13,74	15,70	
55	1,30	1,73	2,16	2,59	3,02	3,45	4,32	5,18	6,04	6,48	,91	7,77	8,64	9,50	10,80	12,95	15,11	17,27	
60	1,41	1,88	2,36	2,83	3,30	3,77	4,71	5,65	6,59	7,06	7,54	8,48	9,42	10,36	11,78	14,13	16,49	18,84	23,60
65	1,53	2,04	2,55	3,06	3,57	4,08	5,10	4,12	7,14	7,65	8,16	9,19	10,21	11,23	12,76	15,31	17,86	20,41	25,50
70	1,65	2,20	2,75	3,30	3,85	4,40	5,50	6,59	7,69	8,24	8,79	9,89	11,00	12,10	13,74	16,49	19,23	21,98	27,50
75	1,77	2,36	2,94	3,53	4,12	4,71	5,89	7,06	8,24	8,83	9,42	10,60	11,80	12,95	14,72	17,66	20,61	23,55	29,40
80	1,88	2,51	3,14	3,77	4,40	5,02	6,28	7,54	8,79	9,42	10,00	11,30	12,56	13,82	15,70	18,84	21,98	25,12	31,40
90	2,12	2,83	3,53	4,24	4,95	5,65	7,06	8,48	9,89	10,60	11,30	12,71	14,13	15,54	17,66	21,20	24,73	28,26	35,30
100	2,36	3,14	3,92	4,71	5,50	6,28	7,85	9,42	11,00	11,78	12,56	14,13	15,70	17,27	19,63	23,55	27,48	31,40	39,20
110	2,59	3,45	4,32	5,18	6,04	6,91	8,64	10,36	12,09	12,95	13,82	15,54	17,27	18,99	21,59	25,91	30,22	34,54	43,20
120	2,83	3,77	4,71	5,65	6,59	7,54	9,42	11,30	13,19	14,13	15,07	16,96	18,84	20,81	23,55	28,26	32,97	37,68	47,10
130	3,06	4,08	5,10	6,12	7,14	8,16	1,21	12,25	14,29	15,31	16,33	18,37	20,41	22,45	25,51	30,62	35,72	40,82	51,00
140	3,30	4,40	5,50	6,59	7,69	8,79	11,00	13,19	15,39	16,49	17,58	19,78	21,98	24,18	27,48	32,97	38,47	43,96	55,00
150	3,53	4,71	5,89	7,06	8,24	9,42	11,78	14,13	16,49	17,66	18,84	21,20	23,55	25,91	29,44	35,33	41,21	47,10	58,90
160	3,77	5,02	6,28	7,54	8,79	10,05	12,56	15,07	17,60	18,84	20,10	22,60	25,12	27,60	31,40	37,70	44,00	50,20	62,80
170	4,00	5,34	6,67	8,01	9,34	10,68	13,35	16,01	18,70	20,02	21,40	24,00	26,69	29,40	33,40	40,30	46,70	53,40	66,70
180	4,24	5,65	7,06	8,48	9,89	11,30	14,13	16,96	19,0	21,20	22,60	25,40	28,26	31,10	35,30	42,40	49,50	56,50	70,70
200	4,71	6,28	7,85	9,42	11,00	12,56	15,70	18,84	22,00	23,55	25,10	28,30	31,40	34,50	39,20	47,10	55,00	62,80	78,50



EBAT (s) mm	S (mm)
6x6	0,283
8x8	0,502
10x10	0,785
12x12	1,130
14x14	1,539

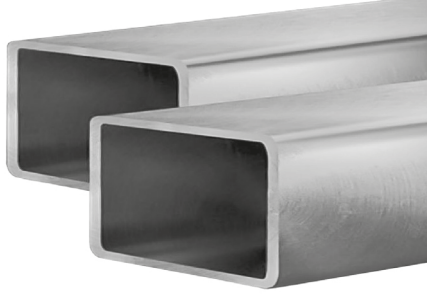
EBAT (s) mm	S (mm)
16x16	2,010
18x18	2,543
20x20	3,140
22x22	3,799
24x24	4,522

EBAT (s) mm	S (mm)
26x26	5,307
28x28	6,154
30x30	7,065
40x40	12,560
50x50	19,625

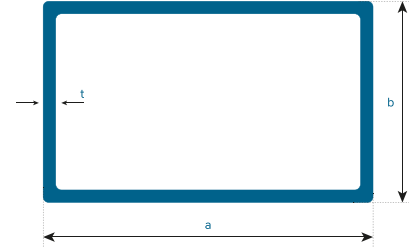


EBAT	KALINLIK	KESİT ALANI	TOPLAM YÜZEY	AĞIRLIK
a	t			
mm.	mm.	cm ²	m ² /m	kg/m
20X20	1,5	1,11	0,0740	0,86
	2,0	1,34	0,0731	1,05
25X25	1,5	1,41	0,0940	1,10
	2,0	1,74	0,0931	1,36
	2,5	2,09	0,0914	1,64
30X30	3,0	2,41	0,0879	1,89
	1,5	1,75	0,1140	1,34
	2,0	2,14	0,1130	1,68
	2,5	2,59	0,1110	2,03
40X40	3,0	3,01	0,1100	2,36
	1,5	2,39	0,1540	1,81
	2,0	2,94	0,1530	2,31
50X50	2,5	3,59	0,1510	2,82
	3,0	4,21	0,1500	3,30
	4,0	5,35	0,1460	4,20
	2,0	3,74	0,1930	2,98
60X60	2,5	4,59	0,1910	3,60
	3,0	5,41	0,1900	4,25
	4,0	6,95	0,1860	5,45
	5,0	8,36	0,1830	6,56
70X70	2,0	4,54	0,2330	3,56
	2,5	5,59	0,2310	4,39
	3,0	6,61	0,2300	5,19
	4,0	8,55	0,2260	6,71
	5,0	10,10	0,2180	8,13
80X80	2,5	6,59	0,2710	5,17
	3,0	7,81	0,2700	6,13
	4,0	10,10	0,2660	7,97
90X90	5,0	12,40	0,2630	9,70
	3,0	9,01	0,3100	7,07
	4,0	11,70	0,3060	9,22
	5,0	14,40	0,3030	11,30
90X90	6,0	17,10	0,2980	13,20
	3,0	10,20	0,3500	8,01
	4,0	13,30	0,3460	10,50
90X90	5,0	16,40	0,3430	12,80
	6,0	19,50	0,3380	15,10

EBAT	KALINLIK	KESİT ALANI	TOPLAM YÜZEY	AĞIRLIK
a	t			
mm.	mm.	cm ²	m ² /m	kg/m
100x100	3,0	11,40	0,390	0,96
	4,0	14,90	0,386	11,70
	5,0	18,10	0,382	14,20
	6,0	21,30	0,377	17,00
120x120	8,0	27,20	0,370	21,40
	3,0	14,00	0,470	10,80
	4,0	18,20	0,466	14,20
	5,0	22,10	0,458	17,50
140x140	6,0	27,20	0,453	20,70
	8,0	33,60	0,445	26,40
	4,0	21,40	0,546	16,80
	5,0	26,10	0,538	20,70
150x150	6,0	31,40	0,533	24,50
	8,0	40,00	0,525	31,40
	10,0	47,70	0,508	38,10
	4,0	23,00	0,586	18,00
	5,0	28,10	0,578	22,30
160x160	6,0	34,00	0,573	26,40
	8,0	43,20	0,565	33,90
	10,0	51,70	0,548	41,30
	4,0	24,60	0,626	19,30
180x180	5,0	30,10	0,618	23,80
	6,0	36,50	0,613	28,30
	8,0	46,50	0,605	36,50
	10,0	55,70	0,588	44,40
	5,0	34,10	0,698	27,00
200x200	6,0	41,50	0,693	32,10
	8,0	52,80	0,685	41,50
	10,0	63,70	0,668	50,70
	5,0	38,10	0,778	30,10
250x250	6,0	46,50	0,773	35,80
	8,0	59,20	0,765	46,50
	10,0	71,70	0,748	57,00
	5,0	48,10	0,978	38,00
300x300zz	6,0	59,10	0,973	45,20
	8,0	75,20	0,965	59,10
	10,0	91,70	0,948	72,70
	6,0	71,70	1,173	54,70
300x300zz	8,0	91,20	1,165	71,60
	10,0	111,70	1,148	88,40

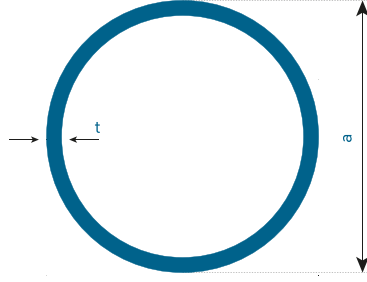


Toleranslar : $T \leq 2\text{mm} \pm \%10$
 Kalınlık : $T \geq 2\text{mm} \pm \%12,5$



EBAT	KALINLIK	KESİT ALANI	TOPLAM YÜZEY	AĞIRLIK
axb	t			
mm.	mm.	cm ²	m ² /m	kg/m
20X40	1,2	1,35	0,115	1,80
	1,5	1,75	0,114	1,34
	2,0	2,14	0,113	1,68
25X50	2,0	2,70	0,141	2,12
	2,5	3,40	0,139	2,60
30X50	3,0	3,83	0,137	3,01
	2,0	2,94	0,153	2,31
	2,5	3,59	0,151	2,82
30X50	3,0	4,21	0,150	3,30
	4,0	5,35	0,146	4,20
	2,0	3,74	0,193	2,93
40X60	2,5	4,59	0,191	3,60
	3,0	5,41	0,190	4,25
	4,0	6,95	0,186	5,45
40X60	5,0	8,86	0,183	6,56
	2,0	4,54	0,233	3,56
	2,5	5,59	0,231	4,39
50X70 40X80	3,0	6,61	0,230	5,19
	4,0	8,55	0,226	6,71
	5,0	10,40	0,223	8,13
50X90 40X100	2,0	5,34	0,273	4,19
	2,5	6,59	0,271	5,17
	3,0	7,81	0,270	6,13
50X100	4,0	10,10	0,266	7,97
	5,0	12,40	0,263	9,70
	2,5	7,09	0,291	5,60
50X100	3,0	8,41	0,290	6,60
	4,0	10,90	0,286	8,59
	5,0	13,40	0,283	10,50
60X100	2,5	7,59	0,311	5,96
	3,0	9,01	0,310	7,07
	4,0	11,70	0,306	9,22
60X100	5,0	14,40	0,303	11,30
	3,0	10,20	0,350	8,01
80X100 60X120	4,0	13,30	0,346	10,50
	5,0	16,40	0,343	12,80

EBAT	KALINLIK	KESİT ALANI	TOPLAM YÜZEY	AĞIRLIK
a	t			
mm.	mm.	cm ²	m ² /m	kg/m
100x100	4,0	16,60	0,426	13,00
	5,0	20,10	0,418	16,00
	6,0	23,90	0,413	18,90
	8,0	30,40	0,405	23,90
120x120	4,0	18,20	0,466	14,20
	5,0	22,10	0,458	17,50
	6,0	26,50	0,453	20,70
	8,0	33,60	0,445	26,40
140x140	4,0	19,00	0,486	14,90
	5,0	23,10	0,478	18,30
	6,0	27,80	0,473	21,70
	8,0	35,20	0,465	27,70
150x150	4,0	21,40	0,546	16,80
	5,0	26,10	0,538	20,70
	6,0	31,50	0,533	24,50
	8,0	40,00	0,525	31,40
160x160	10,0	47,70	0,508	38,10
	5,0	28,10	0,578	22,30
	6,0	34,10	0,573	26,40
	8,0	43,20	0,565	33,90
180x180	10,0	51,70	0,548	41,30
	5,0	30,10	0,618	23,80
	6,0	36,60	0,613	28,30
	8,0	46,40	0,605	36,50
200x200	10,0	55,70	0,588	44,40
	5,0	38,10	0,778	30,10
	6,0	46,60	0,773	35,8
	8,0	59,20	0,765	46,50
250x250	10,0	71,70	0,748	57,00
	6,0	52,90	0,873	40,50
	8,0	47,20	0,865	52,80
	10,0	81,70	0,848	64,8
300x300zz	6,0	59,10	0,973	45,20
	8,0	75,20	0,965	59,10
	10,0	91,70	0,948	72,70
	6,0	71,70	1,173	54,70
300x300zz	8,0	91,20	1,165	71,60
	10,0	111,70	1,148	88,40
300x300zz	10,0	111,70	1,148	88,40



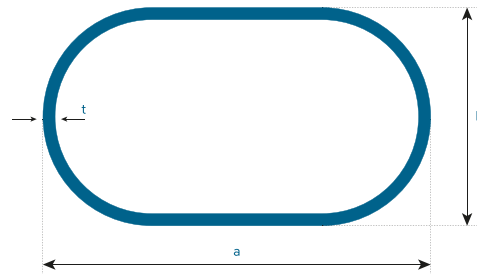
BORULAR

EBAT	KALINLIK	KESİT ALANI	TOPLAM YÜZEY	AĞIRLIK
axb	t			
mm.	mm.	cm ²	m ² /m	kg/m
21,3	2,0	1,21	0,0669	0,95
	2,5	1,48	0,0669	1,16
	3,0	1,72	0,0669	1,35
26,9	2,0	1,56	0,0845	1,23
	2,5	1,92	0,0845	1,50
	3,0	2,25	0,0845	1,77
33,7	2,0	1,99	0,1060	1,56
	2,5	2,45	0,1060	1,92
	3,0	2,89	0,1060	2,27
42,4	2,0	2,54	0,1330	1,99
	2,5	3,13	0,1330	2,46
	3,0	3,71	0,1330	2,91
48,3	4,0	4,83	0,1330	3,79
	2,0	2,91	0,1520	2,38
	2,5	3,60	0,1520	2,82
	3,0	4,27	0,1520	3,35
60,3	4,0	5,57	0,1520	4,37
	5,0	6,80	0,1520	5,34
	2,0	3,66	0,1890	2,88
	2,5	4,54	0,1890	3,56
60,3	3,0	5,40	0,1890	4,24
	4,0	7,07	0,1890	5,55
	5,0	8,69	0,1890	6,82

EBAT	KALINLIK	KESİT ALANI	TOPLAM YÜZEY	AĞIRLIK
axb	t			
mm.	mm.	cm ²	m ² /m	kg/m
7,61	2,0	4,66	0,2390	3,65
	2,5	5,78	0,2390	4,54
	3,0	6,89	0,2390	5,41
	4,0	9,06	0,2390	7,11
88,93	5,0	11,20	0,2390	8,70
	2,0	5,46	0,2790	4,29
	2,5	6,79	0,2790	5,33
88,93	3,0	8,10	0,2790	6,36
	4,0	10,70	0,2790	8,38
	5,0	13,20	0,2790	10,30
	2,0	6,26	0,3190	4,91
101,6	2,5	7,78	0,3190	6,11
	3,0	9,29	0,3190	7,29
	4,0	12,30	0,3190	9,63
	5,0	15,20	0,3190	11,90
114,3	2,5	8,78	0,3590	6,89
	3,0	10,50	0,3590	8,23
	4,0	13,90	0,3590	10,90
	5,0	17,20	0,3590	13,50
6,0	20,50	0,3590	16,00	

EBAT	KALINLIK				
	0,90	1,00	1,20	1,50	2,00
axb	kg./m.				
mm.					
21,5x15,5	0,535	0,592	0,704	0,869	
30x15	0,535	0,592	0,704	0,869	
34x16	0,601	0,666	0,793	0,980	
35x15	0,602	0,666	0,793	0,980	
40x16	0,679	0,752	0,897	1,110	
40x20	0,712	0,789	0,941	1,160	
42x21	0,757	0,838	1,000	1,240	
43x20	0,757	0,838	1,000	1,240	
50x20	0,868	0,962	1,148	1,425	
51x26	0,912	1,010	1,200	1,490	
50x30	0,934	1,036	1,237	1,536	2,023
50x32	0,969	1,069	1,237	1,588	2,174

OVAL KESİTLİ PROFİLLER





Dış Çap		S (mm)																	
		2,00	2,30	2,60	2,90	3,20	3,60	4,00	4,50	5,00	5,40	5,60	6,30	7,10	8,00	8,80	10,00	12,00	
mm.		kg./m.																	
21,3		0,95	1,08	1,20	1,32	1,43	1,57	1,71	1,86	2,01	2,12								
	22,0	0,99	1,12	1,24	1,37	1,48	1,63	1,78	1,94	2,10	2,21								
	25,0	1,13	1,29	1,44	1,58	1,72	1,90	2,07	2,27	2,47	2,61								
	25,4	1,15	1,31	1,46	1,61	1,75	1,94	2,11	2,32	2,52	2,66								
26,9		1,23	1,40	1,56	1,72	1,87	2,07	2,26	2,49	2,70	2,86								
	30,0	1,38	1,57	1,76	1,94	2,11	2,34	2,56	2,83	3,08	3,28								
	31,8	1,47	1,67	1,87	2,07	2,26	2,50	2,74	3,03	3,30	3,52	3,62							
	32,0	1,48	1,68	1,89	2,08	2,27	2,52	2,76	3,05	3,33	3,54	3,65							
33,7		1,56	1,78	1,99	2,20	2,41	2,67	2,93	3,24	3,54	3,77	3,88							
	35,0	1,63	1,85	2,08	2,30	2,51	2,79	3,06	3,38	3,70	3,94	4,06	4,46						
	38,0	1,78	2,02	2,27	2,51	2,75	3,05	3,35	3,72	4,07	4,34	4,47	4,92						
	40,0	1,87	2,14	2,40	2,65	2,90	3,23	3,55	3,94	4,32	4,61	4,75	5,24						
42,4		1,99	2,27	2,55	2,82	3,09	3,44	3,79	4,21	4,61	4,93	5,08	5,61						
	44,5	2,10	2,39	2,69	2,97	3,26	3,63	3,99	4,44	4,87	5,21	5,37	5,93						
48,3		2,28	2,61	2,93	3,25	3,56	3,97	4,37	4,86	5,34	5,71	5,90	6,53						
	51,0	2,42	2,76	3,10	3,44	3,77	4,21	4,64	5,16	5,67	6,07	6,27	6,94						
	54,0	2,56	2,93	3,30	3,65	4,01	4,47	4,93	5,49	6,04	6,47	6,68	7,41						
	57,0	2,71	3,10	3,49	3,87	4,25	4,74	5,23	5,83	6,41	6,87	7,10	7,88						
60,3		2,88	3,29	3,70	4,10	4,51	5,03	5,55	6,19	6,82	7,31	7,55	8,39						
	63,5	3,03	3,47	3,90	4,33	4,76	5,32	5,87	6,55	7,21	7,74	8,00	8,89						
	70,0	3,35	3,84	4,32	4,80	5,27	5,89	6,51	7,27	8,01	8,60	8,89	9,90						
	73,0			4,51	5,01	5,51	6,16	6,81	7,60	8,38	9,00	9,31	10,36						
76,1				4,71	5,23	5,75	6,44	7,11	7,95	8,77	9,41	9,74	10,84						
82,5					5,69	6,26	7,00	7,74	8,66	9,56	10,27	10,62	11,84						
88,9					6,15	6,76	7,57	8,37	9,37	10,34	11,12	11,50	12,83						
	101,6				7,06	7,76	8,70	9,63	10,78	11,91	12,81	13,26	14,81						
114,3					7,97	8,77	9,83	10,88	12,18	13,48	14,50	15,01	16,78	18,77	20,97				
	127,0				8,87	9,77	10,95	12,13	13,59	15,04	16,19	16,76	18,75	20,99	23,48				
	133,0				9,30	10,24	11,49	12,72	14,26	15,78	16,99	17,59	19,68	22,04					
139,7					9,78	10,77	12,08	13,39	15,00	16,61	17,88	18,52	20,72	23,22	25,98	28,41			
	141,3				9,90	10,90	12,22	13,54	15,18	16,81	18,10	18,74	20,97	23,50	26,30	28,75			
	159,0				11,16	12,29	13,80	15,29	17,14	18,99	20,45	21,18	23,72	26,60	29,79	32,59	36,74		
168,3					11,83	13,03	14,62	16,21	18,18	20,13	21,69	22,47	25,17	28,22	31,62	34,61	39,04		
	177,8				12,51	13,78	15,46	17,14	19,23	21,31	22,96	23,78	26,64	29,89	33,50	36,67	41,38		
	193,7				13,64	15,03	16,88	18,71	21,00	23,27	25,07	25,98	29,11	32,67	36,63	40,12	45,30		
219,1						17,04	19,13	21,22	23,81	26,40	28,46	29,48	33,06	37,12	41,65	45,64	51,56		
	244,5								23,72	26,63	29,53	31,84	32,99	37,01	41,57	46,66	51,15	57,83	
273,0									26,53	29,80	33,04	35,63	36,93	41,43	46,56	52,28	57,33	64,86	77,24
323,9									31,55	35,44	39,32	42,41	43,96	49,34	55,47	62,32	68,38	77,41	92,30

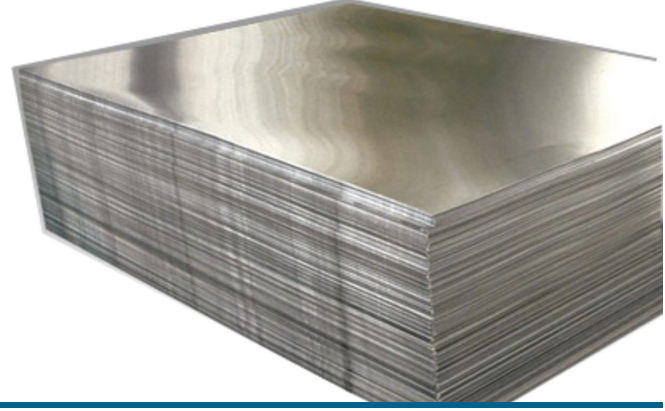
SPİRAL KAYNAKLI BORULAR



Dış Çap			Et Kalınlığı (mm)																		
inch	Anma Çapı	mm.	4,0	4,5	5,0	5,6	6,3	7,1	8,0	8,8	10,0	11,0	12,5	14,2	16,0	17,5	20,0	25,0	30,0		
			kg./m.																		
8	200	219,1	21,2	23,8	26,4	29,5	33,1	37,1	41,6	45,6	51,6										
10	250	273	26,5	29,8	33	36,9	41,4	46,6	52,3	57,3	64,9										
12	300	323,9	31,6	35,4	39,3	44	49,3	55,5	62,3	68,4	77,4	84,9	96								
14	350	355,6	34,7	39	43,2	48,3	54,3	61	68,6	75,3	85,2	93,5	106								
16	400	406,4	39,7	44,6	49,5	55,4	62,2	69,9	78,6	86,3	97,8	107	121								
18	450	457,2	44,7	50,2	55,7	62,3	70	78,8	88,6	97,3	110	121	137								
20	500	508	49,7	55,9	62	69,4	77,9	87,7	98,6	108	123	135	153								
22	550	558,8		61,5	68,3	76,4	85,9	96,6	109	119	135	149	168	191	214						
24	600	609,6			74,6	83,5	93,8	106	119	130	148	162	184	209	234						
26	650	660,4			80,8	90,4	102	114	129	141	160	176	200	226	254						
28	700	711,2			87,1	97,4	109	123	139	152	173	190	215	244	274						
30	750	762				104	117	132	149	163	185	204	231	262	294	321	366				
32	800	812,8				112	125	141	159	175	198	218	247	280	314	343	391				
34	850	863,6					133	150	169	186	211	231	262	298	335	365	416				
36	900	914,4					141	159	179	196	223	245	278	315	354	387	441				
40	1000	1016					157	177	199	219	248	273	309	351	395	431	491				
44	1100	1118						195	219	241	273	300	341	387	435	475	542				
48	1200	1219						212	239	263	298	328	372	422	475	519	591	736			
52	1300	1321							259	285	323	355	403	458	515	563	642	799			
56	1400	1422							279	307	348	383	435	493	555	606	692	861			
60	1500	1524									373	410	466	529	595	650	742	924			
64	1600	1626									399	438	497	564	635	694	792	987	1181		
68	1700	1727											529	600	675	738	842	1049	1256		
72	1800	1829												560	636	715	782	892	1112	1331	
80	2000	2032													623	707	795	869	992	1237	1481
88	2200	2235														778	876	957	1093	1363	1631
100	2500	2540														885	996	1089	1243	1551	1857
120	3000	3048															1196	1308	1493	1864	2233

Galvanizli Düz Levha Kullanım Alanları

- Beyaz eşya sanayiinde,
- Otomatic sanayiinde,
- Her türlü klima tesislerinde,
- Kablo kanalları yapımında,
- Her çeşit depo yapımında,
- Soba ve boru imalatında,
- Tersanelerde, Profil yapımında
- Güneş kollektörleri yapımında kullanılır.



Galvanizli Levha Özellikleri

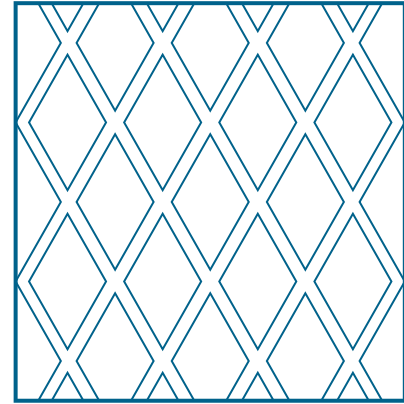
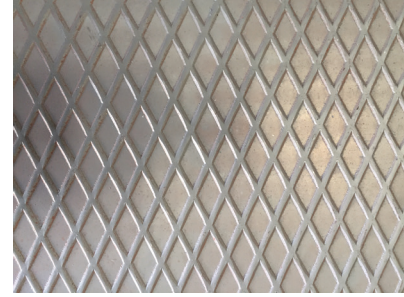
- Levha kalınlığı: min. 0.30 mm, max. 3.00 mm.
- Levha genişliği: min. 600mm, max. 1250 mm.
- Levha uzunluğu: 0.30 mm - 0.90 mm için, min. 1000 mm, max 4000 mm.
1.00 mm - 3.00 mm için, min 1000 mm, max 6000 mm.
- İstif ağırlığı: min. 1 ton, max 5 ton.
- Çinko kaplama miktarı Türk ve dünya standartlarına uygun olarak yapılır.

Galvanizli Düz Levha Ağırlıkları (kg/m²)

Kalınlık	Uzunluklar (mm)					
	1000	2000	2400	3000	3500	4000
0,30	2,38	4,76	5,71	7,14	8,33	9,52
0,35	2,53	5,06	6,07	7,59	8,86	10,12
0,40	2,93	5,86	7,03	8,79	10,26	11,72
0,50	3,75	7,50	9,00	11,25	13,13	15,00
0,60	4,98	9,96	11,95	14,94	17,43	19,92
0,70	5,77	11,54	13,85	17,31	20,20	23,08
0,80	6,56	13,12	15,74	19,68	22,96	26,24
0,90	7,35	14,70	17,64	22,05	25,73	29,40
1,00	8,14	16,28	19,54	24,42	28,49	32,56
1,50	9,78	19,56	23,47	29,34	34,23	39,12
2,00	12,16	24,32	29,18	36,48	42,56	48,64

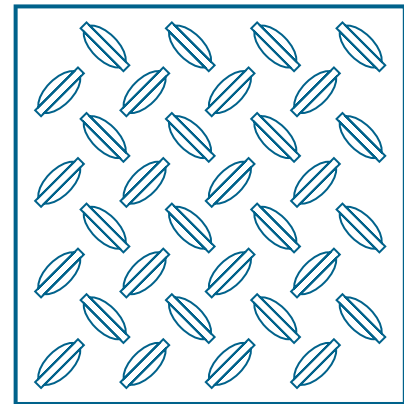
BAKLAVALI SAÇLAR

S (mm)	kg/Plaka		
	kg/m2	1000 x 2000	1200 x 2400
2/3	20,60	41,20	59,32
3/4	27,50	55,00	79,20
4/5	34,35	68,70	98,72
5/6	41,25	82,50	118,80
5,5/7	48,10	96,20	138,52
6/7	51,10	102,20	147,17
6,5/8	55,00	110,00	158,40
7/8	58,95	117,90	169,78
7,5/9	61,85	123,70	178,12
8/9	66,80	133,60	192,38
8,5/10	68,75	137,50	198,00
9/10	94,65	149,30	215,00



SETA SAÇLAR

S (mm)	kg/Plaka		
	kg/m2	1000 x 2000	1200 x 2400
2/3	18,60	37,20	53,57
3/4	25,50	51,00	73,44
4/5	32,35	66,70	93,17
5/6	39,25	78,50	113,04
5,5/7	46,10	92,20	132,77
6/7	49,10	98,20	141,41
6,5/8	53,00	106,00	152,64
7/8	56,95	113,90	164,02
7,5/9	59,85	119,70	172,37
8/9	64,80	129,60	186,62
8,5/10	66,75	133,50	192,24
9/10	72,65	145,30	209,23





konmaksan[®]
Çelik Konstrüksiyon Tar.Nak.İnş.Tic.Ltd.Şti.



Tel.: +90.332. 345 28 61
Fax: +90.332. 345 28 62
bilgi@konmaksan.com.tr

  /konmaksancelik

www.konmaksan.com.tr